

# BENNE BOT L

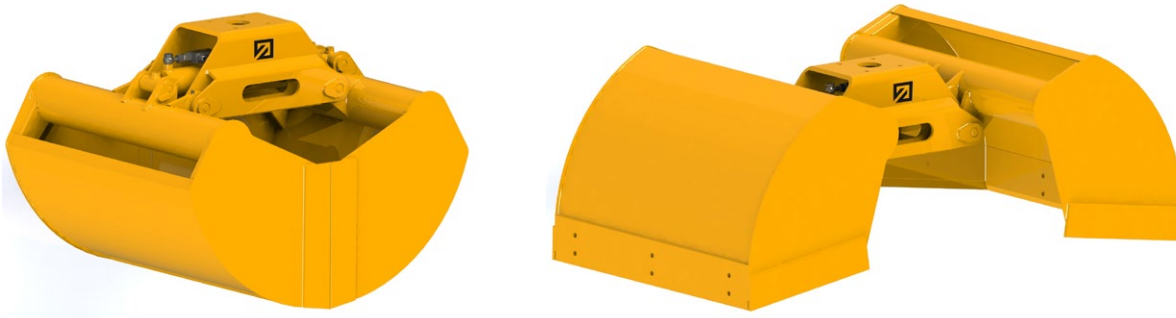
## I - Benna bivalve a cilindro orizzontale con grande apertura e capacità per carico di materiali differenti

GB - Clamshell bucket with horizontal cylinder with a large opening and capacity for handling different materials

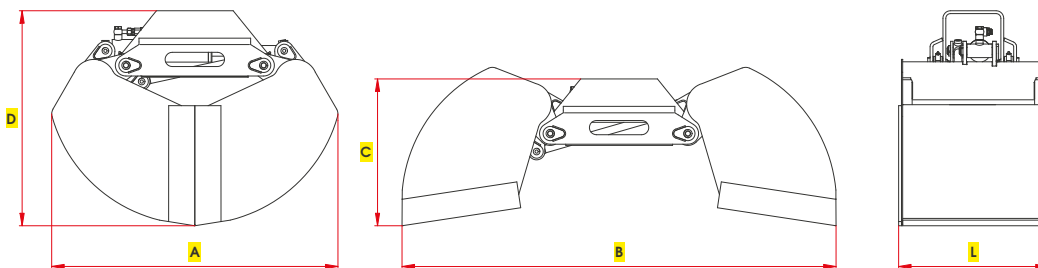
D - Zweischalengreifer mit liegendem Zylinder mit großer Öffnungsweite und Inhalt für verschiedenen Materialumschlag

F - Benne preneuse à vérin horizontal de grande ouverture et capacité pour le chargement et déchargement des plusieurs matériaux

E - Cuchara bivalva con cilindro horizontal con gran apertura y capacidad para carga y descarga de materiales diversos





## DISEGNO TECNICO / TECHNICAL DRAWING



Portata gru a braccio sfilato / Lifting capacity at the end of boom



Peso escavatore / Excavator weight

Modello Type	Capacità Capacity Lt	Portata Load kg	Peso Weight kg	Pressione Pressure Max bar	Portata olio Oil flow Lt/min	 Ton.	 Ton.	A mm	B mm	C mm	D mm	L mm
<b>BOT L 150</b>	150	1000	260	200	50	0,6-1,5	4,0-7,0	1206	1830	620	900	360
<b>BOT L 210</b>	220	1000	269	200	50	0,6-1,8	4,0-7,0	1206	1830	620	900	430
<b>BOT L 300</b>	300	1300	287	200	50	0,8-2,0	4,0-7,0	1206	1830	620	900	630
<b>BOT L 400</b>	400	1300	296	200	50	0,8-2,0	4,0-7,0	1206	1830	620	900	730
<b>BOT L 450</b>	460	1300	305	200	50	0,8-2,2	4,0-7,0	1206	1830	620	900	830
<b>BOT L 590</b>	580	1300	323	200	50	0,8-2,4	4,0-8,0	1206	1830	620	900	1030